

## **Historic, Archive Document**

Do not assume content reflects current scientific knowledge, policies, or practices.



62.13 index

# RETAIL PRICE LIST

★ MAR 17 1953 ★  
U. S. Department of Agriculture

---

---

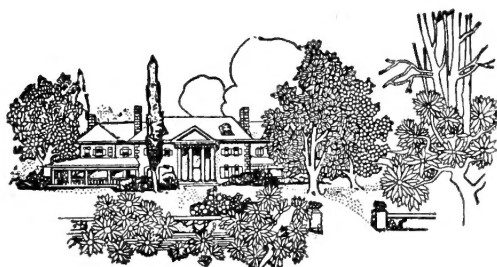
**FALL 1952 - SPRING 1953**

---

---

# CLINTON NURSERIES

CLINTON, CONN.



Telephone 6-2852



# EVERGREENS

## ABIES — FIR

### A. *Fraseri* (Balsam Fir).

Dark Green lustrous needles.

18-24 in. ....	\$4.00
2- 3 ft. ....	5.00

## CHAMAECYPARIS — CYPRESS

### C. *Plumosa* and *Plumosa aurea* (Plume-like Cypress).

Feathery green and feathery golden foliage. Very compact.

15 -18 in. ....	2.00
18 -24 in. ....	3.00
2 - 2½ ft. ....	3.50
2½- 3 ft. ....	4.00
3 - 4 ft. ....	6.00
4 - 5 ft. ....	9.00
5 - 6 ft. ....	12.00
6 - 7 ft. ....	16.00
7 - 8 ft. ....	20.00

### C. *Sulphurica* (Sulphur Cypress).

Bright golden dwarf Cypress.

12-15 in. ....	2.00
15-18 in. ....	3.00
18-24 in. ....	4.50

### C. *Squarrosa veitchi* (Moss or Blue Cypress). Short, needle-like, pale blue green leaves — quite irregular in growth.

15-18 in. ....	2.00
18-24 in. ....	3.00
2- 3 ft. ....	5.00

## JUNIPERUS — JUNIPER

### J. *Pfitzeriana* (Pfitzer Juniper).

Broad bulky, dwarf evergreen with grey green foliage.

Stands salt water spray.

12 -15 in. ....	2.75
15 -18 in. ....	3.75
18 -24 in. ....	5.00
2 - 2½ ft. ....	7.50
2½- 3 ft. ....	10.00
3 - 3½ ft. ....	15.00
3½- 4 ft. ....	20.00

### J. *Hibernica* (Irish Juniper).

Narrow upright growth. Silvery foliage.

18-24 in. ....	2.00
2- 3 ft. ....	3.00
3- 4 ft. ....	4.00

J. *Stricta* (Greek Juniper).

Dense steel-blue foliage.

12	-15	in.	2.50
15	-18	in.	3.50
18	-24	in.	4.50
2	- 2½	ft.	6.00
2½	- 3	ft.	7.50

J. *Sabina* (Savin Juniper).

Light green foliage. Fan shaped. Stands salt water spray.

18	-24	in.	3.50
2	- 2½	ft.	5.00
2½	- 3	ft.	7.00

**PICEA — SPRUCE**

P. *Glauca pigmy* (Dwarf Spruce).

Blue-green needles. Very dense.

3-3½	ft. spread.	25.00
------	-------------	-------

P. *Pungens glauca* (Blue Colorado Spruce).

Dense steel-blue foliage.

2-	3 ft.	8.00
3-	4 ft.	12.00
4-	5 ft.	15.00
5-	6 ft.	18.00
6-	7 ft.	22.00
7-	8 ft.	30.00
8-	10 ft.	40.00
10-	12 ft.	50.00
12-	14 ft.	60.00

P. *Pungens glauca kosteri* (Koster Blue Spruce). Grafted variety. Steel-blue color. The only true blue.

4-	5 ft.	18.00
5-	6 ft.	25.00
6-	8 ft.	35.00
8-	9 ft.	50.00
9-	10 ft.	75.00

**PINUS — PINE**

P. *Strobus* (White Pine).

Fast growing. Soft green foliage.

4-	5 ft.	9.00
5-	6 ft.	11.00
6-	7 ft.	13.50
7-	8 ft.	16.50

# PSEUDOTSUGA DOUGLASSI

## Douglas Fir.

Light blue greenish foliage. Dense.

3-4 ft. ....	7.00
4-5 ft. ....	10.00
5-6 ft. ....	15.00

## TAXUS — YEW

### T. *Cuspidata* (Spreading Yew).

Informal and spreading in shape. Very dark green foliage. Holds its color all winter. Very hardy near the seashore.

12 -15 in. ....	3.00
15 -18 in. ....	4.00
18 -24 in. ....	5.50
2 - 2½ ft. ....	7.50
2½- 3 ft. ....	10.00
3 - 3½ ft. ....	15.00
3½- 4 ft. ....	20.00
4 - 5 ft. ....	22.00
5 - 6 ft. ....	40.00
6 - 7 ft. ....	60.00

### T. *Cuspidata capitata* (Upright Yew).

Formal, upright tree form of the above variety.

12 -15 in. ....	3.00
15 -18 in. ....	4.00
18 -24 in. ....	5.50
2 - 2½ ft. ....	7.00
2½- 3 ft. ....	9.00
3 - 3½ ft. ....	12.00
3½- 4 ft. ....	15.00
3½- 4 ft. extra heavy. ....	18.00
4 - 4½ ft. ....	18.00
4 - 4½ ft. extra heavy. ....	22.00
4½- 5 ft. ....	22.00
4½- 5 ft. extra heavy. ....	30.00
5 - 6 ft. ....	28.00
5 - 6 ft. extra heavy. ....	40.00

### T. *Media hicksi* (Hick's Yew).

A narrow, upright Yew. Deep rich green foliage.

12 -15 in. ....	3.00
15 -18 in. ....	4.00
18 -24 in. ....	5.00
2 - 2½ ft. ....	6.50
2½- 3 ft. heavy. ....	10.00
3 - 3½ ft. ....	15.00

- R. *Maximum* (Rosebay Rhododendron).  
White to pale pink.

18-24 in.	4.00
2- 3 ft.	6.50
3- 3½ ft.	10.00

- R. *Hybrid*.

Red — White — Pink.

18 in.	7.50
24 in.	10.00
2½ ft.	15.00

## DECIDUOUS SHADE AND ORNAMENTAL TREES

### ACER — MAPLE

- A. *Dasycarpum* (Silver Maple).

Large rapid growing tree. Light green leaves, silver underneath.

8-10 ft.	6.00
10-12 ft.	10.00
12-14 ft.	15.00

- A. *Palmatum atropurpureum* (Bloodleaf Maple).  
Dwarf red-leaved Maple.

18-24 in. grafted	6.50
-------------------	------

- A. *Platanoides* (Norway Maple).

Fast grower. Dense shade. Symmetrical form  
and

- A. *Saccharum* (Sugar or Rock Maple).

Scarlet or orange foliage in fall.

6- 8 ft.	5.00
8-10 ft. ¾-1" cal.	6.00
10-12 ft. 1 -1½" cal.	8.00
12-14 ft. 1½-2" cal.	11.00
12-14 ft. 2 -2½" cal.	15.00
12-14 ft. 2½-3" cal.	20.00

The following prices are balled and burlapped.

14-16 ft. 3-4" cal.	40.00
14-16 ft. 4-5" cal.	60.00
16-20 ft. 5-6" cal.	85.00
20-25 ft. 7" cal.	125.00
25-30 ft. 8" cal.	175.00
30-40 ft. 9" cal.	225.00

- A. *Platanoides Schwedleri* (Schwedler's Maple).

Foliage red to bronze.

7- 8 ft.	6.00
8-10 ft.	8.00
10-12 ft. 1¼-1½" cal.	10.00
12-14 ft. 1½-2" cal.	15.00
12-14 ft. 2 -2½" cal.	20.00



## BETULA — BIRCH

### B. *Alba pendula gracilis* (Cutleaf -Weeping Birch).

5- 6 ft. ....		4.50
6- 8 ft. ....		6.50
8-10 ft. ....		8.50
10-12 ft. 1	-1½" cal.....	12.00
12-14 ft. 1	1½-2" cal.....	18.00
14-16 ft. 2	-2½" cal.....	25.00
14-16 ft.	3" cal.....	35.00

### B. *Papyrifera* (Canoe Birch).

Tall tree with white trunk and large leaves.

4- 6 ft. clumps.....		6.00
8-10 ft. clumps.....		10.00
10-12 ft. clumps.....		14.00
12-14 ft. clumps.....		18.00
14-16 ft. clumps.....		25.00

## CORNUS — DOGWOOD

### C. *Florida* (White Flowering Dogwood).

White flowers in Spring. Twenty-five feet.

3-4 ft. ....		5.00
4-5 ft. ....		7.00
5-6 ft. . .		9.00
6-8 ft. extra heavy.....		12.00

### C. *Florida rubra* (Pink Flowering Dogwood).

Pink blossoms. Twenty feet.

3-4 ft. ....		6.50
--------------	--	------

## CRATAEGUS — HAWTHORNE

### C. *Oxyacantha splendens* (Paul's Double Scarlet Hawthorne). Fifteen feet.

4-5 ft. ....		6.00
5-6 ft. ....		8.00
6-7 ft. ....		10.00

## FAGUS — BEECH

### F. *Sylvatica* (Green leaved Beech).

10-12 ft. 3	-3½" cal.....	30.00
10-12 ft. 3	½-4" cal.....	38.00
14-16 ft. 5	-6" cal.....	100.00

### F. *Sylvatica purpurea* (Red leaved Beech).

10-12 ft. 2	½-3" cal.....	30.00
10-12 ft. 3	-3½" cal.....	38.00
10-12 ft. 3	½-4" cal.....	45.00
12-14 ft. 5	-5½" cal.....	90.00
14-16 ft. 6	-6½" cal.....	125.00

### F. *Sylvatica riversi* (River's purple Beech).

3-4 ft. ....		15.00
4-5 ft. ....		20.00

## MAGNOLIA

M. *Soulangeana* (Saucer Magnolia).  
20 ft. Blossoms white inside and lavender-pink outside.

18-24 in. ....	5.00
2- 3 ft. ....	7.50
3- 4 ft. ....	10.00
4- 5 ft. ....	15.00

## MALUS — FLOWERING CRABAPPLE

M. *hupehensis* — Fragrant Pink Flowering.  
M. *Lemoine* — Crimson.  
M. *Purpurea Eleyi* — Red Flower — Red Leaf.

4- 5 ft. ....	3.50
5- 6 ft. ....	4.50
6- 8 ft. ....	6.50
8-10 ft. ....	10.00
8-10 ft. 1-1¼" cal. ....	15.00

M. *Sargentii* — Sargent Crab — White.

3-4 ft. ....	4.50
4-5 ft. ....	6.00

## PLATANUS — PLANETREE OR SYCAMORE

P. *Orientalis*.  
Ninety feet.

8-10 ft. ....	10.00
10-12 ft. 1½-2" cal. ....	15.00
12-14 ft. 2 -2½" cal. ....	20.00

## PRUNUS — FLOWERING CHERRY

*Single Weeping Cherry*.  
Single pink flowers.

5-6 ft. 3 year heads. ....	7.50
4 year heads. ....	10.00

*Kwanzan*.  
Double bright pink drooping clusters.

4-5 ft. ....	5.00
5-6 ft. ....	7.50
6-8 ft. ....	10.00

## QUERCUS — OAK

Q. *Palustris* (Pink Oak).  
Rapid growing, symmetrical tree. Ninety feet.

8-10 ft. 1 -1¼" cal. ....	8.00
10-12 ft. 1¼-1½" cal. ....	10.00
12-14 ft. 1½-2" cal. ....	15.00
12-14 ft. 2 -2½" cal. ....	20.00
2½-3" cal. ....	28.00
3 -3½" cal. ....	35.00
3½-4" cal. ....	45.00

## SALIX — WILLOW

S. *Vit. aurea pendula* (Golden branched Weeping Willow).

5- 6 ft.	¾-1''	cal.....	4.00
6- 8 ft.	1 -1¼''	cal.....	6.00
6- 8 ft. heavy	1¼-1½''	cal.....	10.00
8- 9 ft. heavy	1½-1¾''	cal.....	15.00
10-12 ft.	1¾-2''	cal.....	20.00

## SORBUS — ASH

S. *Aucuparia* (European Mountain Ash).  
50 ft. White flowers and bright red fruit.

8-10 ft.	1½-1¾''	cal.....	7.00
10-12 ft.	1¾-2''	cal.....	9.00
12-14 ft.	2 -2½''	cal.....	15.00

## TILIA — LINDEN

Large tree prices on application.

## ULMUS — ELM

U. *American* (American Elm).  
Tall vase-shaped. Eighty foot. The following prices are balled and burlapped.

3½-4 in.	cal.....		35.00
4 -5 in.	cal.....		40.00
5 -6 in.	cal.....		45.00
6 -7 in.	cal.....		60.00
8 in.	cal.....		80.00

## HARDY ORNAMENTAL SHRUBS

The following shrubs except where noted are priced as follows:

2-3 ft. Bare Root.....		1.25 ea.
3-4 ft. Bare Root.....		1.50 ea.

Bare Root shrubs must be purchased prior to April 15th.  
3-4 ft. Balled and Burlapped..... 2.50 ea.  
Balled and Burlapped shrubs must be purchased prior June 15th.

## ALTHEA — ROSE OF SHARON

*Althea* (Rose of Sharon).  
Twelve feet. All colors. September.

## AZALEA MOLLIS AND KAEMFERI

In variety.

15-18 in. ....		5.00
18-24 in. ....		6.50
2- 2½ ft. ....		7.50

## BENZONIN

B. *Aestivale* (Spice Bush).  
Ten feet. Yellow flowers. Early in Spring.

## BERBERIS — BARBERRY

- B. *Thunbergi* (Green Barberry).  
Dense, thorny bushy shrub with red berries.
- |                          | Per 10       |
|--------------------------|--------------|
| 12-15 in. Bare Root..... | .40 ea. 3.00 |
| 15-18 in. Bare Root..... | .50 ea. 4.50 |
| 18-24 in. Bare Root..... | .60 ea. 5.50 |
- B. *Thunbergi atropurpurea* (Red leaved Barberry).  
Foliage bright red in spring, dull red in summer and blazing scarlet in fall.
- |                |         |
|----------------|---------|
| 15-18 in. .... | .60 ea. |
| 18-24 in. .... | .80 ea. |

## BUDDLEIA — BUTTERFLY BUSH

- B. *Charming* (Pink Butterfly bush).  
Spikes of pink flowers.
- |                          |      |
|--------------------------|------|
| 2 yr. 7" paper pots..... | 1.50 |
|--------------------------|------|
- B. *Davidi magnifica* (Oxeye Butterfly bush).
- |                          |      |
|--------------------------|------|
| 2 yr. 7" paper pots..... | 1.50 |
|--------------------------|------|
- B. *Ille de France* (Butterfly Bush ).  
Deep Lilac purple.
- |                          |      |
|--------------------------|------|
| 2 yr. 7" paper pots..... | 1.50 |
|--------------------------|------|

## CALLICARPA

- C. *Japonica* (Beautyberry).  
Flowers pink to white, fruit violet.

## CALYCANTHUS

- C. *Floridus* (Common Sweet Shrub or Pineapple Bush or Strawberry Shrub). 8 ft. Fragrant reddish-brown flowers in summer.

## CYDONIA

- Cydonia* (Flowering Quince).  
Five feet. May.

## DEUTZIA

- D. *Gracilis* (Slender Deutzia).  
3 ft. White flowers in June.
- |                                     |      |
|-------------------------------------|------|
| 18-24 in. Bare root.....            | 1.50 |
| 18-24 in. Balled and Burlapped..... | 2.50 |
- D. *Scarbra var.* (Pride of Rochester).  
22 feet. White flowers tinged with rose outside.

## EUONYMUS

- E. *Alatus* (Winged Euonymus).  
Six feet. Dwarf form.
- |                                   |      |
|-----------------------------------|------|
| 2-3 ft. Balled and Burlapped..... | 5.00 |
| 3-4 ft. Balled and Burlapped..... | 7.50 |

## FORSYTHIA

- F. *Intermedia spectabilis* (Showy border Forsythia).  
8 ft. abundance of large bright yellow blossoms. April-May.
- F. *Suspensa fortunei* (Fortune Forsythia).  
10 ft. Drooping branches. Golden yellow flowers. April-May.

## HYDRANGEA

- H. *Arborescens grandiflora* (Snowhill Hydrangea). 4 ft.  
White flowers in June-July.
- H. *Paniculata grandiflora* (Peegee Hydrangea).  
10 ft. White flowers turning to rose in fall.
- H. *Hortensia* (Blue Hydrangea).  
Large round blue flower clusters.  
3 year balled and burlapped. . . . . 2.50

## KOLKWITZIA

- K. *Amabilis* (Beautybush).  
8 ft. Pink bell-shaped flowers in June.

## LIGUSTRUM — PRIVET

- L. *Ovalifolium* (California Privet).  
Upright growth with dark glossy leaves. Ten feet.

	Each	Per 10	Per 100
12-18 in. B.R. . . . .	.20	1.80	12.00
18-24 in. B.R. . . . .	.25	2.25	16.00
2- 3 ft. B.R. . . . .	.30	2.70	20.00
3- 4 ft. B.R. . . . .	.35	3.15	28.00

## LONICERA — HONEYSUCKLE

- L. *Morrowi* (Morrow Honeysuckle).  
8 ft. White flowers. May-June. Red Fruit.

## PHILADELPHUS — MOCKORANGE

- P. *Coronarius* (Sweet Mockorange).  
10 ft. Fragrant white flowers. June.
- P. *Lemoinei* (Lemoine Mockorange).  
5 ft. Very fragrant.
- P. *Virginalis* (Hybrid Mockorange).  
6 ft. Large semi-double white fragrant flowers in June.

## PRUNUS

- P. *Glandulosa* (Double Pink Flow. Almond).  
5 ft. Double pink flowers in May.  
18-24 in. Balled and Burlapped. . . . . 2.50
- P. *Glandulosa sinesia* (Dbl. Wh. Fl. Almond).  
5 ft. White flowered form of above.  
18-24 in. Balled and Burlapped. . . . . 2.50

P. *Maritime* (Beach Plum).

6 ft. White flowers in May-June. Purple edible fruit.

2-3 ft. Balled and Burlapped.....	5.00
3-4 ft. Balled and Burlapped.....	7.50

P. *Pissardi* (Red-leaved Plum).

12 ft. Red leaves.

2-3 ft. ....	2.00
3-4 ft. ....	3.00
4-5 ft. ....	4.50
5-6 ft. ....	6.50
6-8 ft. ....	9.00

**ROSEA — ROSE**

R. *Hugonis* (Hugo Rose).

6 ft. Single yellow flowers May-June.

R. *Rugosa* (Rugosa Rose).

5 ft. Crimson-pink flowers dark green glossy foliage. Large red berries.

R. *Wichuriana* (Wichurian Rose).

Particularly adapted for planting on banks. White flowers.

3 year Bare Root.....	1.50
4 year Bare Root.....	2.00

**SPIRAEA**

S. *Anthony Waterer* (Anthony Waterer Spir)

3 feet. Rosy carmine. June-July.

2-3 ft. Bare Root.....	1.50
2-3 ft. Balled and Burlapped.....	2.50

S. *Prunifolia Plena* (Dbl. Bridal Wreath).

6 ft. White flowers. April-May.

S. *Van Houttei* (Van Houtte Spirea).

10 ft. White flowers. May-June.

**SYMPHORICARPOS**

S. *Racomosus* (Common Snowberry).

6 ft. Pale pink flowers in summer white fruit in autumn.

S. *Vulgaris* (Indian Current).

6 ft. Red fruit in fall.

**SYRINGA — LILAC**

S. *Vulgaris* (Common Lilac).

15 ft. Purple shades.

S. *Vulgaris alba* (Common White Lilac).

S. *Hybrids* (Hybrid Lilac).

Several colors — Red, Pink, White, Purple and Lilac.

2-3 ft. Balled and Burlapped.....	3.50
3-4 ft. Balled and Burlapped.....	4.50
4-5 ft. Balled and Burlapped.....	6.50

**VACCINIUM — BLUEBERRY**

V. *Corymbosum* (Highbush Blueberry).

6 ft. White to pink flowers in May red foliage in autumn.

2-3 ft. Balled and Burlapped.....	3.50
3-4 ft. Balled and Burlapped.....	5.00
4-5 ft. Balled and Burlapped.....	7.00

V. *Acerifolium* (Mapleleaf Viburnum).

6 ft. Maple-like leaves, white flowers. May-June. Black fruit.

V. *Carlesi* (Fragrant Viburnum).

5 ft. Fragrant, waxy, pink flowers.

18-24 in. Balled and Burlapped.....	4.00
2- 3 ft. Balled and Burlapped.....	6.00

V. *Cassinoides* (Witherod).

12 ft. White flowers June-July, fruit pink changing to dark blue.

V. *Dentatum* (Arrowwood).

8 ft. White flowers May-June. Blue Fr.

V. *Lantana* (Mayfaring tree).

15 ft. White flowers May-June, fruit red turning black.

↘ V. *Lentago* (Nannyberry).

30 ft. White flowers May-June, fruit blue-black.

↘ V. *Opulus* (Highbush Cranberry).

9 to 10 ft. White flowers May-June, scarlet fruit.

V. *Opulus sterile* (Common Snowball).

Large round heads of white flowers May-June.

V. *Tomentosum plicatum* (Snowball Viburnum).

Round heads of white flowers.

**WEIGELA**

W. *Eva Rathke* (Dwarf Crimson Weigela).

Crimson flowers.

W. *Rosea* (Pink Weigela).

8 ft. Pink flowers May-June.

# VINES AND CLIMBING PLANTS

The following varieties are \$1.50 each except where noted in 7 in. paper pots.

## AMPELOPSIS

- A. *Tricuspidata* (Veitchi) (Boston Ivy).  
Handsome dark green foliage. Rapid growing.

## BIGNONIA

- B. *Radicans* (Trumpet Vine).  
Orange flowers. August-September.

## CELASTRUS — BITTERSWEET

- C. *Orbiculatus* (Oriental Bittersweet).  
Orange and scarlet fruit.
- C. *Scandens* (American Bittersweet).  
Orange and scarlet fruit.

## CLEMATIS

- C. *Paniculata* (Sweet Autumn Clematis).  
Fragrant white flowers in September.

## HEDERA

- H. *Helix* (English Ivy).  
Cling evergreen vine with dark glossy green foliage.  
3½ in. pots. . . . . .50

## LONICERA — HONEYSUCKLE

- L. *Halleana* (Halls Honeysuckle).  
Fragrant creamy flowers.  
2 year . . . . .50 ea. 45.00 per 100
- L. *Sempervirens* (Trumpet Honeysuckle).  
Dark green foliage, orange flowers.

## LYCIUM

- L. *Chinese* (Chinese Matrimony Vine).

## POLYGONUM

- P. *Auberti* (Chinese Fleece Vine).  
Fragrant greenish-white flowers in late summer.

## VINCA

- V. *Minor* (Myrtle).  
2 year . . . . .30 ea. 25.00 per 100

## WISTERIA

- W. *Senesis* (Blue Chinese Wisteria).  
3 year grafted. . . . . 3.50  
6 year grafted. . . . . 7.00



# FRUIT TREES AND SMALL FRUITS

## APPLE TREES

↘ <i>Baldwin</i> . Bright red, winter.	
3 year .....	2.50
Bearing size .....	10.00 to 25.00
↘ <i>Delicious</i> . Dark red, winter.	
3 year .....	2.50
Bearing size .....	10.00 to 25.00
↘ <i>Fall Pippin</i> . Yellow, fall.	
3 year .....	2.50
↘ <i>McIntosh</i> . Waxy red, fall.	
3 year .....	2.50
Bearing size .....	10.00 to 25.00
↘ <i>Rhode Island Greening</i> . Green, Winter.	
2 year .....	1.50
↘ <i>Yellow Transparent</i> . Yellow, summer.	
3 year .....	2.50

## BLUEBERRIES

Hybrid Blueberries should be planted in good, slightly acid soil. For best yields, two or three varieties should be planted together.

↘ <i>Cabot</i>	
Berries, sweet, clear blue, early July.	
15-18 in. ....	2.00
4- 5 ft. ....	5.00
↘ <i>Concord</i>	
Largest berries, ripens after Cabot.	
15-18 in. ....	2.00
4- 5 ft. ....	5.00
↘ <i>Pioneer</i>	
Large, sweet berries, early.	
15-18 in. ....	2.00
4- 5 ft. ....	5.00
↘ <i>Rubel</i>	
Best commercial variety, late.	
15-18 in. ....	2.00
4- 5 ft. ....	5.00

## BLACKBERRIES

July and August.

	Each	Per 10
↘ <i>Eldorado</i> .....	1.75	15.00

## CHERRIES

↘	<i>Black Tartarian</i> . Sweet, large and dark.		
	2 year .....		3.00
↘	<i>Windsor</i> . Dark red, sweet, early.		
	2 year .....		3.00

## CRAB APPLES

↘	<i>Red Siberian</i> , 8 year .....		12.00
---	------------------------------------	--	-------

## PEACHES

↘	<i>Belle of Georgia</i> . September, White .....		2.00
↘	<i>Elberta</i> . Orange, yellow, late .....		2.00

## PEARS

↘	<i>Bartlette</i> . Yellow and red, September.		
	3 year .....		3.50
↘	<i>Beurre Bosc</i> . Russet, late.		
	3 year .....		3.50
↘	<i>Clapps Favorite</i> .		
	Yellow and crimson, early.		
	3 year .....		3.50

## PLUMS

↘	<i>Burbank</i> . Early red, 3 year .....		3.00
↘	<i>Lombard</i> . Purple, mid-season.		
	3 year .....		3.00

Some larger sizes at \$5.00 to \$15.00 each.

## RASPBERRIES

		Each	Per 10
↘	<i>Indian Summer</i> .		
	Everbearing .....	1.75	15.00
↘	<i>Latham</i> .		
	Large delicious .....	1.75	15.00
↘	<i>St. Regis</i> .		
	Everbearing .....	1.75	15.00

## GRAPES

↘	<i>Concord</i> .		
	Blue-black, mid-season, sweet.		
	3 year .....		.75
↘	<i>Niagara</i> . Green, early.		
	3 year .....		.75
↘	<i>Worden</i> . Black, early.		
	3 year .....		.75

## STRAWBERRIES

		Per 10	Per 100
↘	<i>Fairfax</i> , early .....	1.00	5.00
↘	<i>Mastodon</i> , Everbearing .....	1.25	7.50
↘	<i>Premier</i> , early .....	1.00	5.00

## **NEW ERA PEAT HUMUS**

---

### Plastic Bags.

1 lb. ....	.15
3 lb. ....	.35

### Kraft with Plastic Liner.

10 lb. ....	.75
25 lb. ....	1.40
50 lb. ....	2.25

## **NEW ERA POTTING SOIL**

---

### Plastic Bags.

1½ lb. ....	.15
4 lb. ....	.35

### Kraft with Plastic Liner.

10 lb. ....	.75
24 lb. ....	1.40

## **NEW ERA AFRICAN VIOLET SOIL**

---

### Plastic Bags.

1½ lbs. ....	.15
4 lbs. ....	.35

## **PLANTING SERVICE**

For the convenience of our customers, we can supply an experienced and responsible planting service. These same experienced men are available during the summer and winter to do your trimming, a very essential operation for the appearance and well-being of any successful planting.

Prices for planting Flowering Shrubs, Vines and Bare Rooted material will be an additional 50% of the purchase price of the stock.

Prices for planting large trees, evergreens and balled and burlapped stock will be an additional 25% of the stock.

## **CLINTON NURSERIES**

**CLINTON, CONNECTICUT      Telephone 6-2852**

NEW YORK STATE

1. The first section of the act shall read as follows:
2. The second section of the act shall read as follows:
3. The third section of the act shall read as follows:
4. The fourth section of the act shall read as follows:
5. The fifth section of the act shall read as follows:

NEW YORK STATE

1. The first section of the act shall read as follows:
2. The second section of the act shall read as follows:
3. The third section of the act shall read as follows:
4. The fourth section of the act shall read as follows:
5. The fifth section of the act shall read as follows:

NEW YORK STATE

1. The first section of the act shall read as follows:
2. The second section of the act shall read as follows:
3. The third section of the act shall read as follows:
4. The fourth section of the act shall read as follows:
5. The fifth section of the act shall read as follows:

NEW YORK STATE

1. The first section of the act shall read as follows:
2. The second section of the act shall read as follows:
3. The third section of the act shall read as follows:
4. The fourth section of the act shall read as follows:
5. The fifth section of the act shall read as follows:

NEW YORK STATE

1. The first section of the act shall read as follows:
2. The second section of the act shall read as follows:
3. The third section of the act shall read as follows:
4. The fourth section of the act shall read as follows:
5. The fifth section of the act shall read as follows: